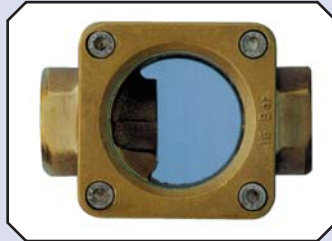


Screwed Flow Indicators

PLAIN TYPE

Suitable for viewing flow conditions in applications with intermittent flow, entrained air and partially filled pipes. A special version for use with steam and condensate uses borosilicate glass to ensure good long-term visibility.

Size	Code
2"	FSI0008
3"	FSI0009
4"	FSI0010
6"	FSI0011



COMMON SPECIFICATION

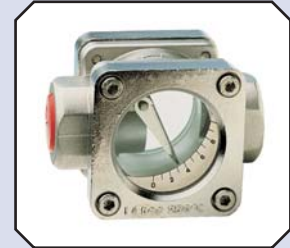
Connections:	Standard: ANSI 150lb RF
Options:	ANSI 300lb RF, PN6, PN16, PN40 or BS 10 table 'E'; and 'F'
Wetted Materials:	St Steel 316, toughened soda lime glass and PTFE
Pressure:	16 bar max
Temperature:	St Steel 250°C max

Dimensions (mm):

Size	Face to Face	Window	Weight
2"	220	77 dia	9kg
3"	260	100 dia	18kg
4"	260	100 dia	25kg
6"	360	150 dia	50kg

FLAP

This style is particularly suited to full bore flows, giving an indication of flow rate against a unit scale. Suitable for horizontal or vertically upward flow.



Size	Flow*	Code
2"	70 L/min	FSI0000
3"	230 L/min	FSI0001
4"	400 L/min	FSI0002
6"	-	FSI0003

*Approximate FSD for water in horizontal pipes (not specified for 6" version)

PADDLE WHEEL

This model can be mounted in an orientation and operates over a wide flow range. Suitable for clear or cloudy liquids.

Size	Flow (L/min)*	Code
2"	25 to 240	FSI0004
3"	60 to 600	FSI0005
4"	100 to 950	FSI0006
6"	250 to 2200	FSI0007



*Operating range

Every effort has been made during the preparation of this document to ensure the accuracy of statements and specifications. However, we do not accept liability for damage, injury, loss or expense caused by errors or omissions made. We reserve the right to withdraw or amend products or documentation without notice.

Head Office: 2 Downgate Drive, Sheffield, S4 8BT, England
Tel: +44(0)114 244 2521 Fax: +44(0)114 243 4838



1-4 Campbell Court, Bramley, Tadley, Hampshire, RG26 5EG, England
Tel: +44(0)1256 884901 Fax: +44(0)1256 882986
email: sales@roxspur.com www.roxspur.com



CERTIFICATE No. FM22358