

Armoured Purgemeter

METAL TUBE PURGE FLOWMETER – TYPES API, APT, APV

Armoured Purgemeters are direct reading flowmeters for liquid or gas measurement on small lines. Using a stainless steel tapered tube to create a variable area flowmeter, the magnetically coupled pointer shows flowrate on an external scale.

Armoured purgemeters are chosen where the higher integrity offered by a metal flow tube is important, or where conventional glass flow tubes are not allowed in the process. Ideal for flow monitoring in purging, mixing or sampling systems, the meters are available with inline (API) or rear facing (APT) screwed connections.

For fine flow rate adjustment, the APV model has an integral multi-turn needle valve. Scales are individually produced to show the actual fluid flow for the process fluids and conditions relevant.

The units are suitable for flush mounting in a control panel, using a simple mounting kit.

FEATURES

- For high integrity of high pressure duty
- Suitable for flush panel mounting
- Scaled for specific process conditions

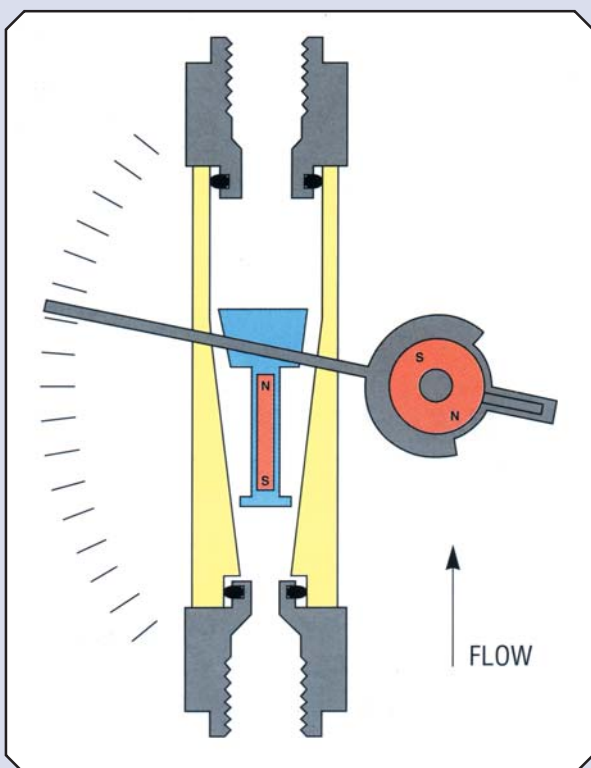


OPERATING PRINCIPLE

The VA meter principle used in the Armoured Purgemeter measures the position of a float in a precision machined tapered tube. The float rises with the fluid flow up the taper until the upthrust balances the float weight. A magnet, sealed within the float casing, drives the external pointer over a full 90°C rotation against a scale printed in actual process flow units.

The meter housing secures the different styles of end block in place, which provide the process connections: between these the flow tube is O-ring sealed onto the end block.

Standard units require no electrical connection.



SPECIFICATION

Materials	Flow tube and end blocks – 316 stainless steel Float – stainless steel for liquids, dural for gases O-ring seals – Viton Flow control valve – 316 stainless steel
Meter Housing	Aluminium, black anodised, polycarbonate window protection IP65
Scales	Specific scale produced to give actual flow rate in Engineering units for quoted process conditions. Standard air and water capacity quoted in flow tables.
Accuracy	VDE/VDI 3513 Class 4 standard
Repeatability	± 0.5% FSD
Fluid Temperature	-20°C to +150°C
Fluid Pressure	150 bar max (non valved models API, APT) 40 bar max (model APV with valve)
Connections	1/4" NPT female

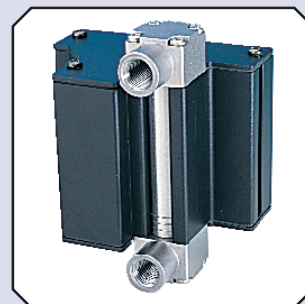
Special versions are available with improved accuracy or built to withstand high temperatures or pressures, or with alternative process connections or from alternative materials.



API



APV



APT

ORDER CODE

Typical Model

A P T S 5 2 1 1 G

Armoured Purgemeter

Meter Type
 I In-line connections
 T Rear facing connections
 V Rear facing connections with fine flow control valve

Construction Materials
 S Stainless steel (316)

Fluid
 G = Gas
 L = Liquid

Connections
 1 1/4" NPT female

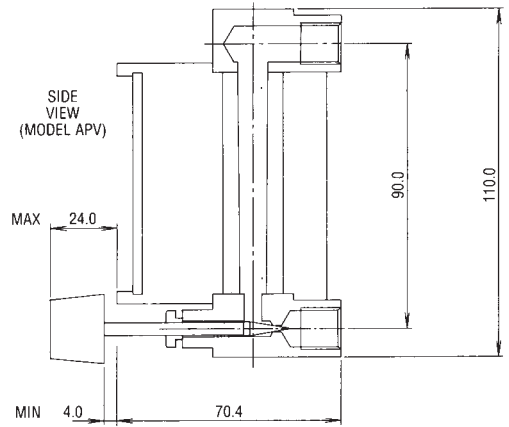
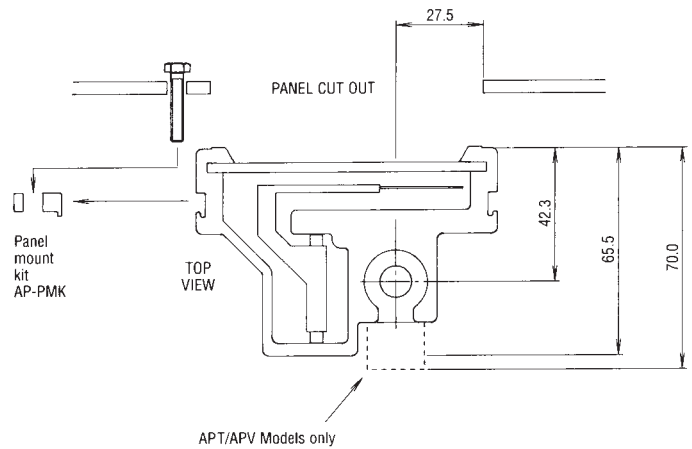
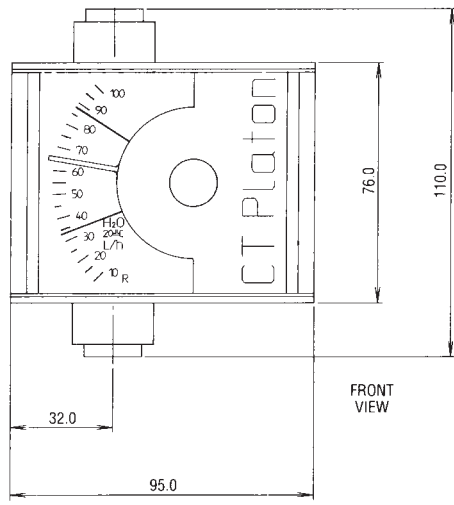
Seal Materials
 2 Viton

FLOW RANGES

Model code	Water flow (20°C) L/hr	Air flow (ATP, 1013 bar at 20°C) L/hr	Typical pressure drop (mBar) at max flow	
			Water	Air
3	1-10	25-250	3	2
4	2-16	40-400	6	3
5	3-25	60-600	8	6
6	4-40	100-1000	19	6
7	6-60	160-1600	24	8

NOTE:

Scales are custom made to show actual process flow, so ranges may differ.
 Please specify fluid density (SG), viscosity and process pressure/temperature, plus normal flowrate, to allow model selection.
 Pressure drops quoted are typical for Model API at maximum flow.

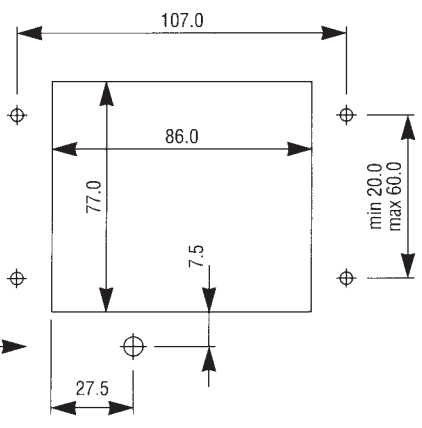


DIMENSIONS

PANEL CUTOUT
(Front view)

4 Holes $\varnothing 4.1$

Model APV
Hole $\varnothing 8.0$ for
Valve spindle



Purge Model APV
Mounted in control panel

Every effort has been made during the preparation of this document to ensure the accuracy of statements and specifications. However, we do not accept liability for damage, injury, loss or expense caused by errors or omissions made. We reserve the right to withdraw or amend products or documentation without notice.

Head Office: 2 Downgate Drive, Sheffield, S4 8BT, England
Tel: +44(0)114 244 2521 Fax: +44(0)114 243 4838



1-4 Campbell Court, Bramley, Tadley, Hampshire, RG26 5EG, England
Tel: +44(0)1256 884901 Fax: +44(0)1256 882986
email: sales@roxspur.com www.roxspur.com

CERTIFICATE No. FM22358